

2020 IMCA SPEEDWAY MOTORS SUPER NATIONALS

CAMPING REGISTRATION: \$150 per spot

Must provide email address to receive camping confirmation! **NO REFUNDS.**
\$175 PER SPOT AFTER AUGUST 27.

DEADLINE: JULY 27
FOR CONSIDERATION GIVEN TO PRIOR YEAR CAMPING SPOTS. NO GUARANTEE.
Camping spot confirmations will be emailed. Camping tickets must be picked up at grandstand ticket booth upon arrival.

Name: _____

Address: _____

City/State/Zip: _____

Home phone: _____ Cell phone: _____

Email: _____ Camper length: _____

2019 Camping Spot Number: _____

Head-to-Head Spots YES NO

Slideouts on both sides YES NO

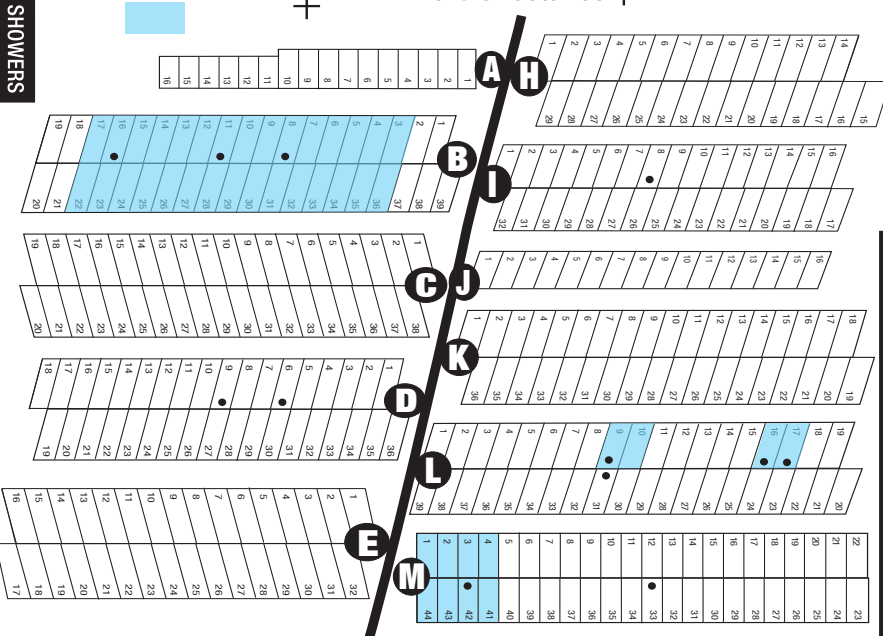
Arrival Date: _____

ALL CAMPERS MUST PARK DIAGONALLY

North ↑

To Grandstands ↑

SHOWERS



- ✓ Highlight your camping first and second location preferences on map.
- ✓ We DO NOT guarantee the same spot(s) as previous years.
- ✓ Blue shaded spots are NOT available.
- ✓ All registrations must be postmarked by August 27 to be processed.
- ✓ Late arrivals the weekend or week of the Super Nationals will be charged \$175 and assigned any remaining available spots upon arrival. Please have completed form filled out prior to arrival.

Return with payment to:
Super Nationals Camping
C/O Jim Majors
1315 NW 25th St., Ankeny, IA 50023

Payment must be in the form of a check or money order.
Make Payable to Boone Speedway.

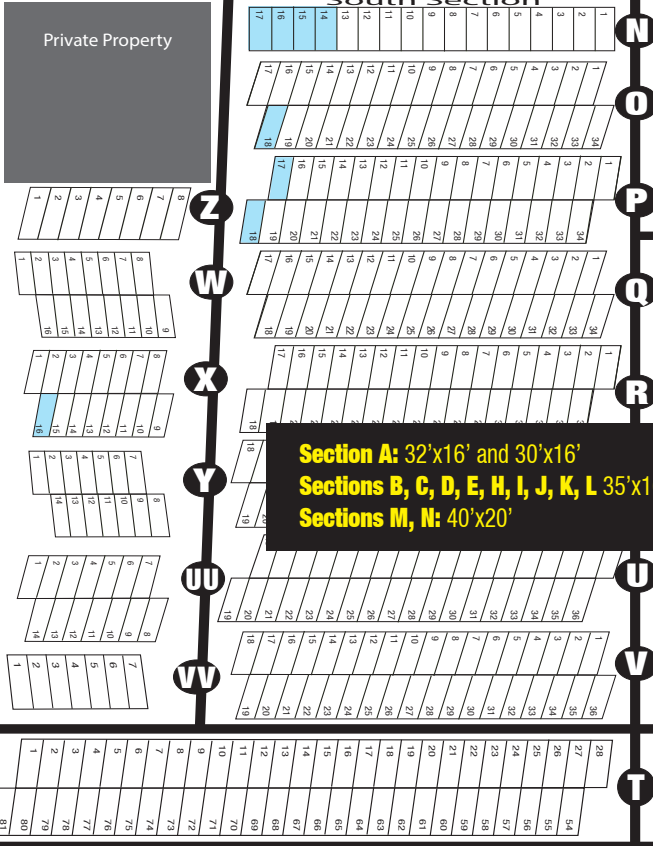
NO REFUNDS

to Hwy. 30

Parking Area

Private Property

South Section

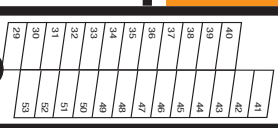


VIP Section Camp Sites with water & electricity for large units may be available for \$500. Call 515-964-9094 for more information.

Pit Parking

Section A: 32'x16' and 30'x16'
Sections B, C, D, E, H, I, J, K, L 35'x16'
Sections M, N: 40'x20'

Sections O, P, Q, R, S, T, U, V, W, X, Y, UU, VV 40'x16' diagonal
Section G: 20'x30' and 30'x30'





2020 CAMPING INFORMATION



IMCA and Boone Speedway welcome you to the IMCA Super Nationals and wish to make your visit at American's Racin' Vacation an enjoyable one.

We have made changes to camping registration due to the popularity and increase in campers.

1. Registration forms are available at www.RaceBoone.com and www.IMCA.com. **After August 27, a late registration fee of \$175 per camping spot will be charged.** No refunds. No exceptions.
2. A completed registration form is required for each camper. Only one form is required for campers requesting an additional spot for vehicle parking. A confirmation will be sent to the email address you provide on the form. Camping and vehicle tags must be picked up upon arrival at the camping office located in front of the grandstands. Late requests may not receive an email confirmation.
3. Returning campers who send in their request prior to the July 27 deadline will be given priority. This does not guarantee the same spot(s) as prior years. Returning campers who send in late requests will be assigned spots on a first come, first serve basis.
4. Returning campers requesting additional spots must fill out a form for each camper within your group. All requests for a group must be submitted together. No additional spots are available in sections A to M. No request for additional camping spots in sections A to M will be filled. If you require additional spots you will need to move to the south campground.
5. All campers must park diagonally in camping spots, except in A, G, M, N.
6. Campers with slide-outs on both sides require 2 spots.
7. Campers requesting two spots must indicate if the additional spot is for a slide out or for a head to head spot (required for units longer than 35 or 40 foot length with vehicle. Check the registration form for the length of each section.
8. Camper Registration Ticket must be displayed on your camper's entry door. Vehicle Registration Ticket must be displayed in the left front windshield.
9. If we are unable to fill your request within the same camping section we will do our best to assign your additional request in close proximity as possible.

1. NO PETS!

2. NO ATVs IN THE CAMPGROUNDS!

3. Camping check-in time is from **10am - 10pm daily.** **Campers arriving after the start of races may be required to park in general parking area until the completion of the evening's events.**
4. All camping spots must be reserved and paid for prior to camping. Vehicle and camper must be contained within the designated lines of the camping spot. Vehicles unable to be contained within their designated area must park in the general parking area or rent an additional spot. No exceptions. If you have questions, please ask Jim or Kelly.
5. Campers may NOT park in the general parking areas.
6. Campers will be allowed one (1) vehicle per campsite. Vehicles not registered with a campsite will not be allowed to park in the campgrounds. This additional vehicle must be parked within the designated campsite lines. Vehicles blocking roads and/or access will be towed without notice.
7. NO GLASS. Beverages in aluminum or plastic containers only.
8. All campfires must be in a ring.

Call with questions:
515-964-9094 or
515-238-9135